



Contact Us Today...



For further information please complete the form below and send back to our office or contact our Technical Sales Team on 028 302 66616 or email sales@fmenvironmental.com:

Please contact me regarding:

OXY-FLO Septicity Dosing Package

Other FM Environmental Products/Services

Name: \_\_\_\_\_

Company: \_\_\_\_\_

Position: \_\_\_\_\_

Address: \_\_\_\_\_

\_\_\_\_\_

\_\_\_\_\_

Contact Phone No.: \_\_\_\_\_

E-Mail: \_\_\_\_\_

Enquiry Details: \_\_\_\_\_

\_\_\_\_\_

\_\_\_\_\_

\_\_\_\_\_

\_\_\_\_\_



'Towards a Cleaner Environment'

FM Environmental Ltd

Greenbank Industrial Estate

Newry BT34 2QX

Phone: 028 (048) 302 66616

Fax: 028 (048) 302 63233

[www.fmenvironmental.com](http://www.fmenvironmental.com)



# OXY-FLO

Septicity Dosing Package



## FME OXY-FLO



Odour and Corrosion caused by sewage going septic, in pumping stations, rising mains and treatment plants is an age old problem requiring a solution. FME have designed the "OXY-FLO" septicity dosing package to combat these issues.

### Features of the OXY-FLO:

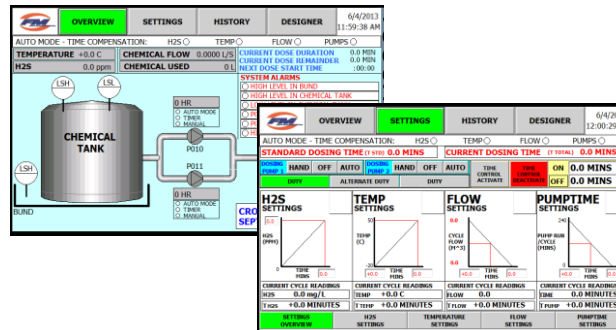
- Packaged plant shipped ready to install
- Suitable for new and existing installations
- Intelligent Duty/Standby Dosing Pumps
- Protected from chemical using incorporated screen
- GRP weatherproof Kiosk c/w Retractable Roof
- Controlled using powerful PLC
- User interface through a Hi-Res HMI Touch Screen
- External alarm indication
- Safety shower/eyewash easily accessible
- Historical data logging of all events & alarms

## Flexibility at Your Fingertips...

The FME OXY-FLO has been designed as a one stop solution in solving your septicity dosing requirements, be it on existing sites or a new installation.

In-House designers will look at your individual requirements, to set up your package before it leaves our premises, providing you with a plug and play system. The intuitive touch screen interface will then allow fine tuning once installed on site. The historical data logging of events and alarms will aid the refinement process.

The OXY-FLO uses Triple Compensation to ensure dosing is carried out effectively and efficiently. By measuring Temperature & H<sub>2</sub>S Levels (using sensors provided) and pumped flow, OXY-FLO will adapt its output to dose the perfect amount of chemical.

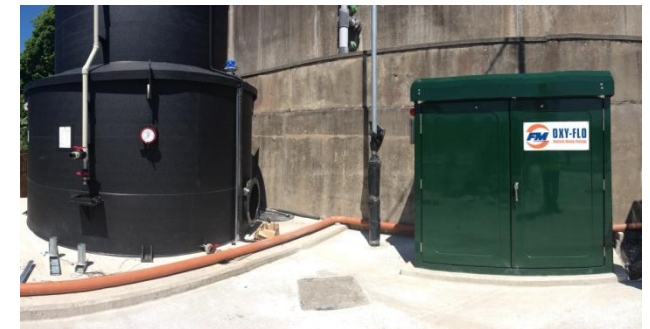


Flexibility is the key and OXY-FLO can easily be adapted to select which compensation is required along with various operating modes. Its versatility enables it to be installed on various sites and allows continuous operation even while servicing the instrumentation.

## Additional Options

The FME OXY-FLO can be supplied and installed as a complete system to suit your individual site needs, including all ancillary requirements:

1. Chemical Storage Tank
2. Integral Tank Bund & Weather Shroud
3. Tank & Bund Level Probes
4. Interconnecting Pipe Work & Hoses
5. Set Up & Commissioning
6. Staff Training



[Contact FM Environmental Ltd Today](#)

FM Environmental, as a MEICA Contractor, can provide, install and service a wide range of Wastewater Treatment Plants, Pumping Stations, Grease Removal Equipment and Automation. Call 028 302 66616 today to discuss your individual needs.